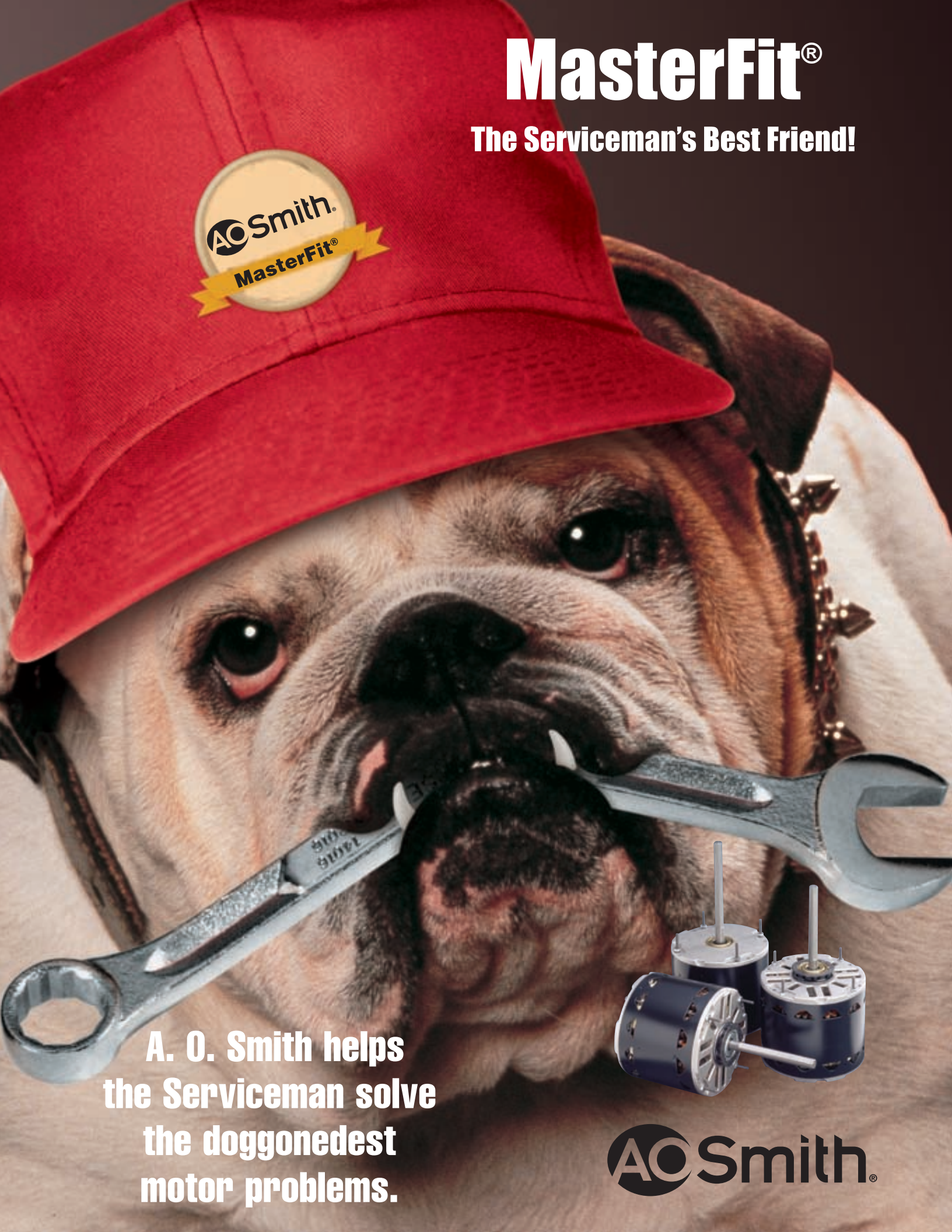


MasterFit®

The Serviceman's Best Friend!



A. O. Smith helps
the Serviceman solve
the doggonedest
motor problems.

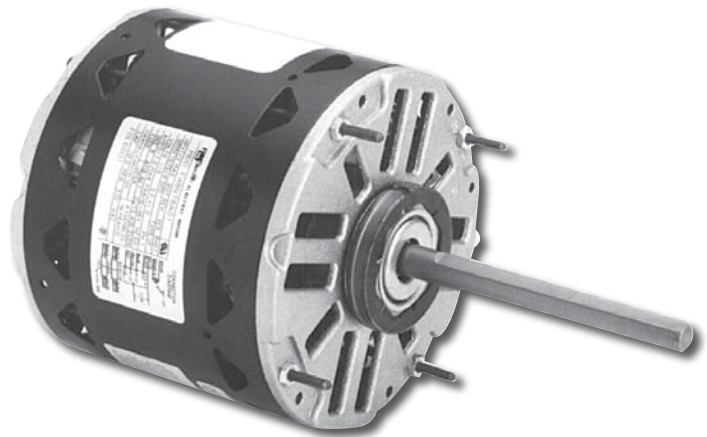
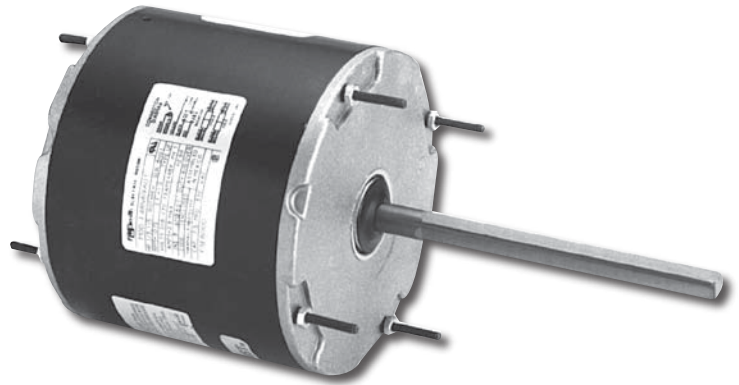


AC Smith®

MasterFit®: One Motor Replaces Many

Features:

- Energy Efficient
- Different Capacitor/
Speed Combinations
- Designed for 370V Capacitor
(not furnished)
- Permanent Split Capacitor
- Ball and Sleeve Bearing
- Rotation Reversible
- Resilient Rings on Blower Motors
- Extended Thru Bolts
- Automatic Protector
- Class B Insulation
- 48 Frame
- Single Phase
- Continuous Duty – Air Over
- Mounts by Belly Band, Thru Bolts
or Shell Holes
- Rheem Mounting Holes in Shell
- 60 Hertz



Benefits:

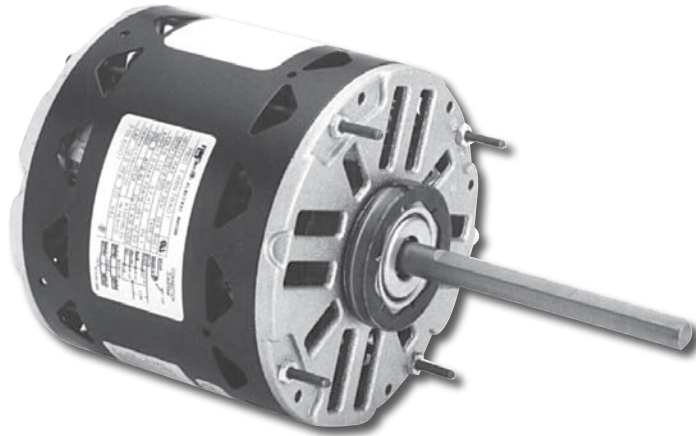
- Less Inventory Required
- Versatile
- Time Saver
- Easy Installations

MasterFit®: Speeds to use

Direct Drive Fan & Blower Motors

Features:

- Energy Efficient
- 4 Speed
- Ambient 40° C
- Class B Insulation
- 60 Hertz
- Open Dripproof
- Permanent Split Capacitor
- Reversible
- Resilient Rings
- Mounts by Belly Band, Thru Bolts or Shell Holes
- Extended Thru Bolts
- Rheem Mounting Holes in Shell



1075 RPM Applications – Sleeve Bearing

Motor To Replace	Speeds to Use * (Color/Approx. RPM)		370V Capacitor	FDL6001 115V FLA	FD6000 208-230V FLA
	Cooling	Heating			
1/2 HP	High (Black/1100)	Med-Hi (Blue/1050) or Med-Lo (Yellow/825)	10 mfd	7.0	3.9
1/3 HP	High (Black/1120)	Med-Hi (Blue/1090) or Med-Lo (Yellow/1030)	5 mfd**	6.7	3.6
1/4 HP	Med-Hi (Blue/1125)	Med-Lo (Yellow/1090) or Lo (Red/1010)	5 mfd**	4.4	2.5
1/5 HP	Med-Lo (Yellow/1110)	Lo (Red/1060)	5 mfd**	3.2	1.8
1/6 HP	Lo (Red/1085)	Lo (Red/1085)	5 mfd**	2.4	1.3

1075 RPM Applications – Ball Bearing

Motor To Replace	Speeds to Use * (Color/Approx. RPM)		370V Capacitor	FDL6002 115V FLA	FD6001 208-230V FLA
	Cooling	Heating			
3/4 HP	High (Black/1110)	Med-Hi (Blue/1080) or Med-Lo (Yellow/1010)	10 mfd	9.1	3.9
1/2 HP	High (Black/1130)	Med-Lo (Yellow/1090) or Lo (Red/1035)	10 mfd	6.6	3.6
1/3 HP	Med-Hi (Blue/1150)	Med-Lo (Yellow/1130) or Lo (Red/1100)	5 mfd**	5.5	3.0
1/4 HP	Med-Lo (Yellow/1150)	Lo (Red/1130)	5 mfd**	3.0	2.3
1/5 HP	Lo (Red/1140)	Lo (Red/1140)	5 mfd**	2.3	2.0

*RPM data from cold motor at nominal horsepower. Actual load will determine effective rpm.

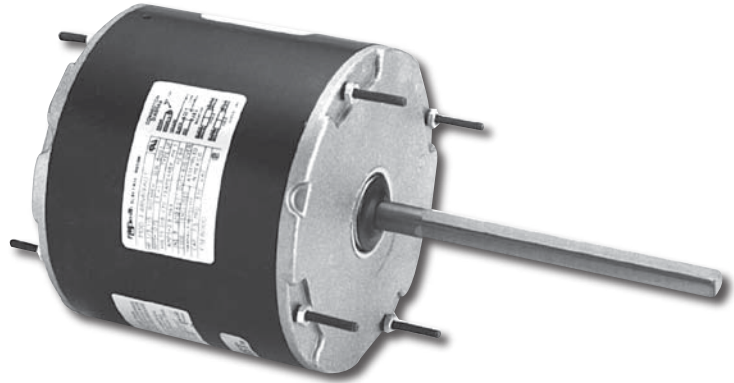
**Using a 7.5 mfd/370V capacitor will result in an approximately 10% stronger motor.

MasterFit®: Speeds to use

Condenser Fan Motors

Features:

- Energy Efficient
- 2 Speed
- Ambient 60° C
- Class B Insulation
- 60 Hertz
- Totally Enclosed
- Permanent Split Capacitor
- Automatic Protector
- Reversible
- All Position Mounting
- Mounts by Belly Band, Thru Bolts or Shell Holes
- Extended Thru Bolts
- Rheem Mounting Holes in Shell



FE6001 (208-230V) 825 RPM Applications—Ball Bearing

Motor To Replace	Speeds to Use (Color/RPM)*	Cap. Mfd***		
		208V	230V	FLA
1/3 HP	High (Black/825)	10	7.5	1.9
1/4 HP	High (Black/835)	10	7.5	1.5
1/5 HP	Lo (Red/825)	10	7.5	1.2
1/6 HP	Lo (Red/835)	10	7.5	1.0

FE6003 (208-230V) 825 RPM Applications—Ball Bearing

Motor To Replace	Speeds to Use (Color/RPM)*	Cap. Mfd***		
		208V	230V	FLA
1/2 HP	High (Black/825)	12.5	10	2.4
1/3 HP	High (Black/835)	12.5	10	1.7
1/4 HP	Lo (Red/825)	12.5	10	1.4
1/5 HP	Lo (Red/835)	12.5	10	1.1

FSE6000 (208-230V) 1075 RPM Applications—Sleeve Bearing

Motor To Replace	Speeds to Use (Color/RPM)*	Cap. Mfd***		
		208V	230V	FLA
1/3 HP	High (Black/1110)	7.5	5	2.8
1/4 HP	High (Black/1135)	7.5	5	2.0
1/5 HP	Lo (Red/1110)	7.5	5	1.7
1/6 HP	Lo (Red/1125)	7.5	5	1.5

FE6000 (208-230V) 1075 RPM Applications—Ball Bearing

Motor To Replace	Speeds to Use (Color/RPM)*	Cap. Mfd***		
		208V	230V	FLA
1/3 HP	High (Black/1110)	7.5	5	2.8
1/4 HP	High (Black/1135)	7.5	5	2.0
1/5 HP	Lo (Red/1110)	7.5	5	1.7
1/6 HP	Lo (Red/1125)	7.5	5	1.5

FE6002 (208-230V) 1075 RPM Applications—Ball Bearing

Motor To Replace	Speeds to Use (Color/RPM)*	Cap. Mfd***		
		208V	230V	FLA
1/2 HP	High (Black/1110)	12.5	10	3.9
1/3 HP	High (Black/1135)	12.5	10	2.2
1/4 HP	Lo (Red/1110)	12.5	10	1.6
1/5 HP	Lo (Red/1125)	12.5	10	1.3

FE6004 (208-230V) 1075 RPM Applications—Ball Bearing

Motor To Replace	Speeds to Use (Color/RPM)*	Cap. Mfd***		
		208V	230V	FLA
3/4 HP	High (Black/1110)	15	12.5	5.3
1/2 HP	High (Black/1135)	15	12.5	3.0
1/3 HP	Lo (Red/1110)	15	12.5	1.9
1/4 HP	Lo (Red/1125)	15	12.5	1.0

*RPM data from cold motor at nominal horsepower. Actual load will determine effective rpm.

***Note: based on using a 370V capacitor.

MasterFit®: Specifications

Condenser Fan Motors

- Ambient 60°C • Totally Enclosed

Stock No.	HP	Capacitor 370 Volts		Speeds to Use	Amps	RPM	Volts	Bearings	Lead Lengths	Shell Dimension	Shaft Length
		208V	230V								
FE6001	1/3	10 mfd	7.5	High	1.9	825	208-230	Ball	36"	5.24"	1/2" x 6"
	1/4	10 mfd	7.5	High	1.5						
	1/5	10 mfd	7.5	Low	1.2						
	1/6	10 mfd	7.5	Low	1.0						
FE6003	1/2	12.5 mfd	10	High	2.4	825	208-230	Ball	36"	5.61"	1/2" x 6"
	1/3	12.5 mfd	10	High	1.7						
	1/4	12.5 mfd	10	Low	1.4						
	1/5	12.5 mfd	10	Low	1.1						
FSE6000	1/3	7.5 mfd	5	High	2.8	1075	208-230	Sleeve	36"	4.86"	1/2" x 6"
	1/4	7.5 mfd	5	High	2.0						
	1/5	7.5 mfd	5	Low	1.7						
	1/6	7.5 mfd	5	Low	1.5						
FE6000	1/3	7.5 mfd	5	High	2.8	1075	208-230	Ball	36"	4.86"	1/2" x 6"
	1/4	7.5 mfd	5	High	2.0						
	1/5	7.5 mfd	5	Low	1.7						
	1/6	7.5 mfd	5	Low	1.5						
FE6002	1/2	12.5 mfd	10	High	3.9	1075	208-230	Ball	36"	5.24"	1/2" x 5"
	1/3	12.5 mfd	10	High	2.2						
	1/4	12.5 mfd	10	Low	1.6						
	1/5	12.5 mfd	10	Low	1.3						
FE6004	3/4	15 mfd	12.5	High	5.3	1075	208-230	Ball	36"	5.87"	1/2" x 6"
	1/2	15 mfd	12.5	High	3.0						
	1/3	15 mfd	12.5	Low	1.9						
	1/4	15 mfd	12.5	Low	1.0						

Direct Drive Fan & Blower Motors

- Ambient 40°C • Open Dripproof

■Motor is approximately 10% stronger and has higher starting torque for 1/6, 1/5, 1/4, and 1/3 HP rating with the 7.5 mfd 370 Vac capacitor.

Stock No.	HP	Capacitor 370 Volts		Speeds to Use	Amps	RPM	Volts	Bearings	Lead Lengths	Shell Dimension	Shaft Length
		208V	230V								
FDL6001	1/2	10 mfd		All	7.0	1075	115	Sleeve	26"	4.86"	1/2" x 5"
	1/3	5 mfd	7.5 [■]	All	6.7						
	1/4	5 mfd	7.5 [■]	Lo,Med-Lo,Med-Hi	4.4						
	1/5	5 mfd	7.5 [■]	Lo,Med-Lo	3.2						
	1/6	5 mfd	7.5 [■]	Lo	2.4						
FD6000	1/2	10 mfd		All	3.9	1075	208-230	Sleeve	26"	4.86"	1/2" x 5"
	1/3	5 mfd	7.5 [■]	All	3.6						
	1/4	5 mfd	7.5 [■]	Lo,Med-Lo,Med-Hi	2.5						
	1/5	5 mfd	7.5 [■]	Lo,Med-Lo	1.8						
	1/6	5 mfd	7.5 [■]	Lo	1.3						
FDL6002	3/4	10 mfd		All	9.1	1075	115	Ball	38"	4.86"	1/2" x 5"
	1/2	10 mfd		All	6.8						
	1/3	5 mfd	7.5 [■]	All	5.5						
	1/4	5 mfd	7.5 [■]	Lo,Med-Lo,Med-Hi	3.0						
	1/5	5 mfd	7.5 [■]	Lo,Med-Lo	2.3						
FD6001	3/4	10 mfd		All	3.9	1075	208-230	Ball	38"	4.86"	1/2" x 5"
	1/2	10 mfd		All	3.6						
	1/3	5 mfd	7.5 [■]	All	3.0						
	1/4	5 mfd	7.5 [■]	Lo,Med-Lo,Med-Hi	2.3						
	1/5	5 mfd	7.5 [■]	Lo,Med-Lo	2.0						

MasterFit®: Cross Reference

Condenser Fan Motors

A. O. Smith	Grainger	Emerson	G.E.	Protech	Fasco	Marathon
FE6001	1UME6	5464	3469		D2826	
FE6003	*					
FSE6000	*			51-23053-21	D837	
FE6000	4ME30	5462	3465		D2827	X072
FE6002	*	5465	3468		X076	
FE6004	*					

*Via through Grainger sourcing - ask your Grainger Representative for more information

Direct Drive Fan & Blower Motors

A. O. Smith	Grainger	Emerson	G.E.	Protech	Fasco	Marathon
FDL6001	4ME32	5460	3463	51-23012-41	D2835	X077
FD6000	4ME34	5461	3464	51-23022-41	D833	X073
FDL6002	4ME26	5470	3466		D2832	X074
FD6001	4ME28	5471	3467		D2833	X075

