

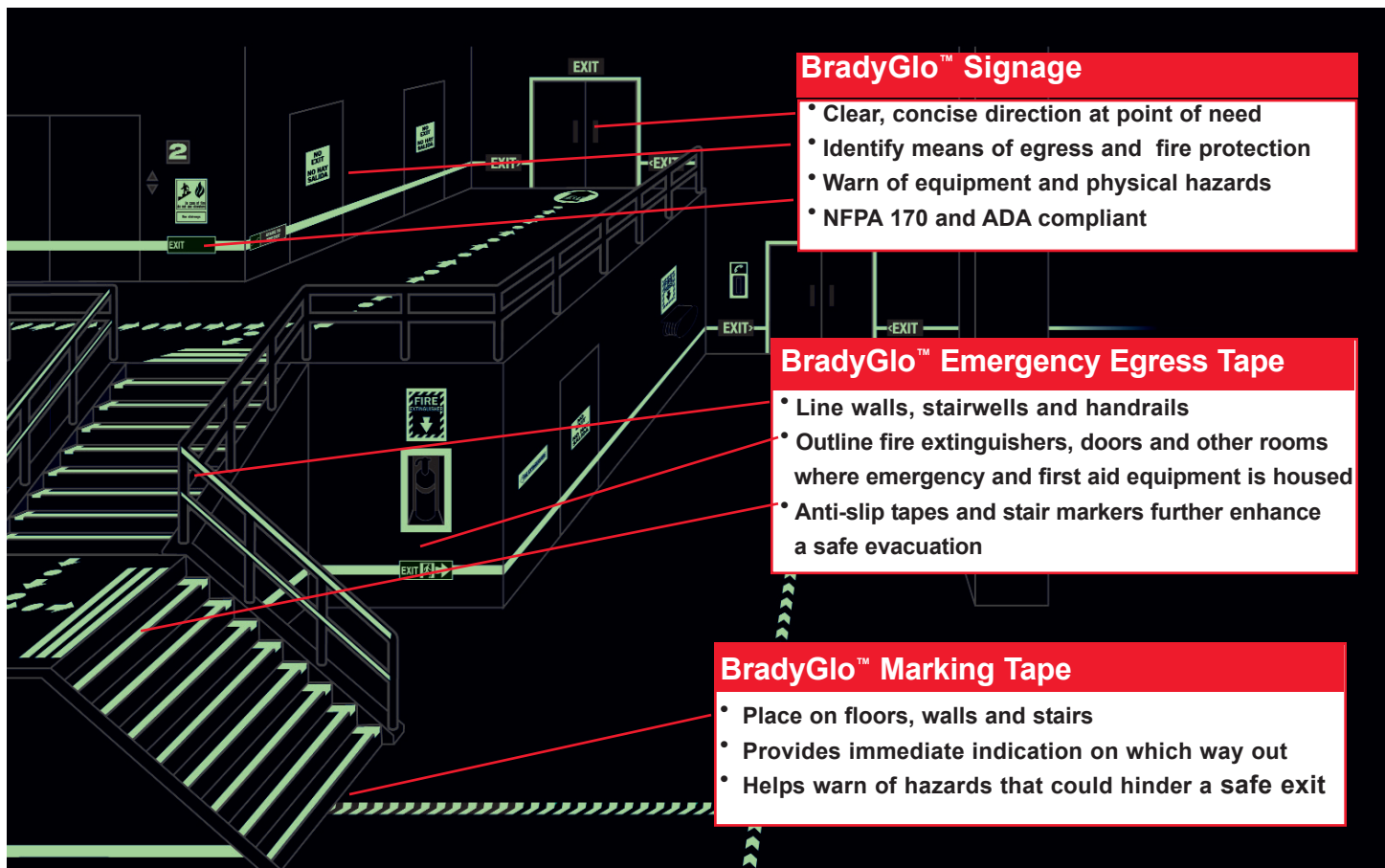
# GRAINGER®

## Important Product Information

### BRADYGLO™ ADVANCED SAFETY GUIDANCE SYSTEM

When all that matters is **getting out**, all that matters is **finding the nearest exit**.

Evacuating people quickly and safely is what the BradyGlo™ Advanced Safety Guidance System is designed to do. A family of new-age glow-in-the-dark products featuring UL-listed Exit Signs, BradyGlo™ products create a continuous egress route that is visible in darkness and below smoke... guiding people to the safest exit.



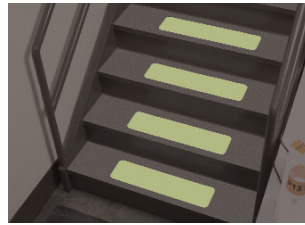
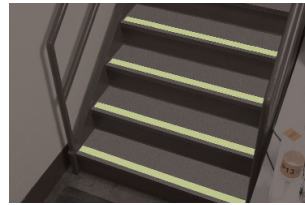
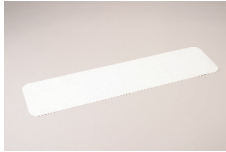
WWW.GRAINGER.COM

**ORDER TODAY!**

## NEW! BradyGlo™ Anti Skid Tape & Cleats now Available!

Over 175 legends are available in the BradyGlo™ 10+ hour photoluminescent sign material. Our signs are designed for safety instructions and egress during power outages and emergency situations. Bradyglo safety signs are available in plastic and self-sticking materials in a variety of sizes to handle all of your application needs.

We also offer BradyGlo tapes (striped, solid, V-style, and arrow style), floor marking arrows and footprints. Also, **NEW photoluminescent anti-skid tape and anti-skid cleats.**



Glow in the Dark Antiskid Tape, Roll, 2" wide x 60'

Brady Model: 99049  
Grainger Stock No. 4HY91

Glow in the Dark Antiskid Cleats  
2" x 6" each,  
10 cleats per pkg.

Brady Model: 99055  
Grainger Stock No. 4HY92

## BradyGlo™ Exit Signs are ENERGY STAR and UL Approved!

### BradyGlo™ Exit Signs are:

- ENERGY STAR approved!
- Listed to UL 924 (US & Canada).
- NFPA Life Safety Code 101 (7.10, 7.101.2, 7.10.1.5, 7.10.1.6, 7.10.2, 7.107.2, A7.10.7.2, 13.4.7.4.2, 13.4.7.4.3)
- NFPA Life Safety Code 101B (Sections 3-10.1.5, 3-10.1.6)
- NFPA 5000 Building Construction & Safety Code (Sections 12.10.1.5, 12.10.1.6)
- 2003 International Building Code (Sections 411.7, 1011)
- 2000 International Building Code (Section 1003.2.10)
- 1999 BOCA National Building Code (Section 1023)
- 1999 Standard Building Code (Section 1016.3)
- 1997 Uniform Building Code (Sections 1003.2.8, 1007.2.7, 1007.6.2)
- OSHA 1910.37
- 1998 California Building Code - High Level & Low Level Exit Sign Regulations (1003.2.8, 1007.2.7, 1007.2.8, 1007.2.9, 1007.3.12, 1007.5.13, 1007.6.2a, 1007.6.2.1a)
- 1998 California Fire Code (Sections 1211, 1212, 3214, 4110, 4111)
- State of California Statutes and Regulations (Sections 13143, 17920.8, 1007.2.7, 1007.2.8, 1007.2.9, 1007.3.12, 1007.5.13, 1007.6.2a, 1007.6.2.1a)
- ICC Evacuation Service, Report #ES-6153
- Department of Defense, United Facilities Criteria on Fire Protection Engineering for Facilities, April 17, 2003



### Technical Data:

**Background:** Black, Green, Red, or White  
**Letter Color:** High Visibility Green  
**Size:** 8.25" x 15.25" x .25"  
**Letter Size:** .875" stroke with 7" height  
**Directional:** Pop out chevron, 2 included  
**Viewing Direction:** 50 feet  
**Life Expectancy:** 25+ years  
**Construction:** .035 painted steel/PL panel  
**Electric Requirements:** NA



Grainger Stock No.  
BLACK

Grainger Stock No.  
GREEN

Grainger Stock No.  
RED

3RY57 Single face sign (wall mount)  
 3RY58 Single face sign with mounting bracket  
 3RY59 Double face sign with mounting bracket

3UA70 Single face sign (wall mount)  
 3TY24 Single face sign with mounting bracket  
 3TY25 Double face sign with mounting bracket

3TY26 Single face sign (wall mount)  
 3TY22 Single face sign with mounting bracket  
 3TY23 Double face sign with mounting bracket



Grainger Stock No.  
WHITE

Grainger Stock No.  
FRAMELESS

3CE81 Single face sign (wall mount)  
 3CE82 Single face sign with mounting bracket  
 3CE83 Double face sign with mounting bracket

3CA51 Red Plastic Frameless sign (wall mount)  
 3CA52 Green Plastic Frameless sign



\*MS3352\*

# GRAINGER®